

HP Engage Go Convertible Solutions



Thriving in today's evolving environments

Built to deliver across today's demanding business landscape, the HP Engage Go 10 & HP Engage Go 13.5 easily transition from all-in-one system(s) to mobile tablet(s). They're durable, highly secure, ideally sized, and integrate essential accessories¹ so you can seamlessly conduct business where and how you need to.



Retail

- Queue busting
- Merchandising
- Stock auditing
- Click & Collect
- Assisted selling
- Manager device



Hospitality

- Mobile order taking
- Concierge
- Tableside payment
- Customer assistance
- Fixed point of sale (docked)



Transportation & Logistics

- Delivery signing for logistics
- Onboard dining (train & plane)
- Warehouse management
- Car rental
- Fleet service tracking



Healthcare

- Bedside consultation
- Telehealth
- Point of sale (docked)
- Patient registration
- Infotainment
- OEM mobile medical imager



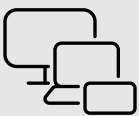
Field Service

- Emergency services
- Onsite servicing
- Evidence collection & tracking
- Meter reading
- Infringement issuing



Manufacturing

- Safety auditing
- Warehouse management
- AR Training
- Process tracking
- Inventory tracking



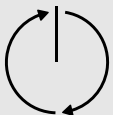
Incredible versatility to delight your customers

Engage your customers and empower your staff—wherever they are—with a device that seamlessly goes from countertop system to sleek and light tablet and embeds key accessories directly into the tablet—barcode scanner, fingerprint reader, and more.¹



Powerful performance, operational simplicity

Power through shifts with up to an Intel® Core™ i5 CPU,² 256GB³ SSD and 16GB RAM. With a 10 inch or 13.5 inch diagonal screen and familiar OS, it runs many standard and non-mobile apps.



Built to last

Rest easy with a system that passes MIL-STD⁵ testing, resists dust and liquid intrusion (IP54 rated)⁶ and withstands frequent disinfecting.⁷ With optional cases for increased durability and ruggedness.



Industry-leading security for your device and data

Safeguard your device with HP Wolf security features⁹ that protect below, in, and above the OS. Customize unlocking procedures, track devices, and manage permissions with HP Smart Dock software.

Key features

Provide an exceptional customer experience with this reliable and powerful solution



Intel® Core™ Processors

Run demanding software solutions and get your customers quickly on their way with an 11th generation Intel® Core™ processor² that delivers powerful performance and productivity.



Sustainably focused

Driving support towards increasing sustainability, with ocean-bound and recycled plastics, ENERGY STAR® 8.0 certification, and recycle-friendly metals.



Secure and accurate authentication

Reduce opportunities for theft, while enabling secure and highly accurate employee log-in through IR camera facial recognition, NFC, or fingerprint reader.¹⁰



Transactions on the go

Take the checkout to your customer with an optional integrated card reader that accepts all card-based payments including EMV, magstripe, and NFC.¹¹

Intentionally designed for demanding environments



Rugged

Passes rigorous MIL-STD⁵ testing and is IP54 rated to resist dust and liquid intrusion.⁶



Disinfectable

Ensure the safety of your customers and employees as this device is designed and tested to withstand frequent disinfecting.⁷



Durable Display

Made of durable Corning® Gorilla® Glass touch display to stand up to daily use.



Long Lifecycle

Plan for the future with a five-year product life cycle and ten-year service life (Engage Go 10), or a four-year product life cycle and nine-year service life (Engage Go 13.5), while delivering the consistency you need for staggered rollouts.



Supported by HP

Rest easy that your IT investment is supported by a three-year onsite standard limited warranty.¹²

Product details

Discover the benefits of sophisticated design and unbeatable performance



Product details

Choose from a wide range of docks and mounts to customize your solution¹



HP Engage Go Dock

Enables quick and easy transitions from countertop system to mobile tablet with HP Smart Dock.



HP Engage Go Column Printer G2¹⁵

Integrated printer in a unique, space-saving column design with increased print speed of 200 mm per second



HP Engage Go Height Adjustable Pole

Provides up to 60 mm of height adjustability and 210° of swivel rotation. The tablet attaches to the pole with the Tilt Mount.¹



HP Engage Go Tilt Mount

Enables tilting of your device—up to 60° up or 53° down. Designed to be used with the Height Adjustable Pole¹ or to attach directly to the wall.



HP Engage Go Fixed Mount

Installs on a wall or to a swing arm through the VESA 75 or 100 pattern on the back!¹ Quickly attach and detach your tablet using HP Smart Dock.

Complete the solution

Gain additional functionality and protection for the HP Engage Go with optional accessories that allow for easy carrying, protect the tablet from accidental drops and make charging multiple units easy.



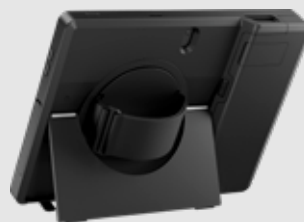
HP Engage Go 13.5 Case

HP Engage Go 13.5" adds an extra layer of protection to your device. Confidently meet your on-the-go business needs with a slim, durable case that protects your technology investment in today's demanding environments.



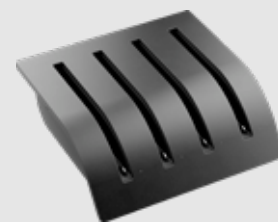
HP Engage Go 10 Case

HP Engage Go 10 Case¹ provides 4-foot drop protection while still enabling access to all port and dock connectors. It allows for a wrist or shoulder strap to be attached for easy handling or hands-free carrying of the tablet.



HP Engage Go 10 Rugged Case

The HP Engage Go 10 Rugged Case¹ provides even more protection for the toughest environments with up to 6-foot drop protection. It also increases the tablet's IP rating to IP65.¹³ The rugged case not only enables easy handling with a hand strap but also allows for hands-free carrying with the ability to attach a shoulder strap. A convenient kickstand also allows the tablet to sit upright on a counter or shelf.



HP Engage Go 10 Multi-charger

The HP Engage Go 10 Multi-Charger enables you to easily charge up to 4 tablets at a time. Tablets fit into the multi-charger with or without the case and both the tablets and the multi-charger can be locked to prevent theft. Save space and place the multi-charger where you need it with the ability to set it on a counter, shelf, or mount it to a wall.

Engage Go Convertible Solutions

Technical specifications

Feature	Engage Go 13.5 inch	Engage Go 10 inch
Introduction date	2022	2021
Processors ¹	Intel® 11th Generation: • Intel® core™ i3-1110G4 • Intel® core™ i5-1140G7	Intel® 11th Generation: • Intel® core™ i3-1110G4 • Intel® core™ i5-1140G7
Display	13.5" diagonal, WUXGA+ (1920 x 1280) touch, IPS, Corning® Gorilla® Glass 5, 340 nits, 100% sRGB	10" diagonal, WUXGA+ (1800 x 1200), touch, IPS, Corning® Gorilla® Glass 5, 400 nits, 45% NTSC
RAM ^{ii,iii}	16 GB LPDDR4 SDRAM	16 GB LPDDR4X-4266 MHz RAM (onboard)
Internal storage ^{iv}	256 GB PCIe® NVMe™	Up to 256 GB PCIe® NVMe™
Communications ^v	Intel® Wi-Fi 6 AX201 (2x2) and Bluetooth® 5 combo non-vPro®; Intel® Dual Band Wireless-AC 8265 802.11ac (2x2) Wi-Fi® and Bluetooth® 5 combo vPro®	Intel® XMM™ 7360 LTE-Advanced Cat 9 Intel® Wi-Fi 6 AX201 (2x2) and Bluetooth® 5 combo, vPro® Intel® Wi-Fi 6 AX201 (2x2) and Bluetooth® 5 combo, non-vPro® Near Field Communication (NFC) module

Feature	Engage Go 13.5 inch	Engage Go 10 inch
Camera	8 MP camera (rear-facing); 2 MP camera with LED indicator (front-facing)	8 MP camera (rear-facing); 2 MP camera with LED indicator (front-facing)
Battery life ^{vi, vii}	Up to 10 hours	Up to 9 hours
Color	Ebony black or ceramic white	Ebony black or ceramic white
Connectivity	Optional advanced hub includes: (2) Powered USB 12V (1) Powered USB 24V (2) Powered serial (4) USB 3.0 USB Type-C® RJ-45 Network Security cable slot MicroSD Card Reader Headset Jack USB Type-C® Power Port Cash drawer jack	Optional advanced hub includes: (2) Powered USB 12V (1) Powered USB 24V (2) Powered serial (4) USB 3.0 USB Type-C® RJ-45 Network Security cable slot MicroSD Card Reader Headset Jack USB Type-C® Power Port Cash drawer jack
Operating system	Windows 11 Professional (64-bit) ^{viii, ix} Windows 10 IoT Enterprise 2021 LTSC 64-bit ^{ix} FreeDOS SUSE Linux® Enterprise Desktop 12 (certification)	Windows 11 Professional (64-bit) ^{viii, ix} Windows 10 IoT Enterprise 2021 LTSC 64-bit ^{ix} Windows 10 IoT Enterprise 2019 LTSC 64-bit ^{ix} Android 11 GMS & AOSP ^{x, xi} FreeDOS SUSE Linux® Enterprise Desktop 12 (certification)
Lifecycle	9-year lifecycle • Four years of manufacturing lifecycle • Up to five years of support	10-year lifecycle • Five years of manufacturing lifecycle • Up to five years of support
Screen size/ dimensions	11.81 X 8.72 X 0.5 in 30 X 22.16 X 1.27 cm	9.43 X 6.92 X 0.4 in (flat option) 9.43 X 6.92 X 0.88 in (bump option) 23.95 X 17.6 X 1 cm (flat option) 23.95 X 17.6 X 2.24 cm (bump option)
IP Rating ^{xii}	IP54	IP54
Certifications & compliance	IEC60601-1-2 MIL-STD 810H CISPR 32 (EN55032) CISPR 35 (EN55035) Energy Star® EPEAT® Gold RoHS2 Compliant	IEC60601-1-2 MIL-STD 810H CISPR 32 (EN55032) CISPR 35 (EN55035) Energy Star® EPEAT® Gold RoHS2 Compliant

- i. Some functionality of this technology, such as Intel® Active Management Technology and Intel Virtualization technology, requires additional 3rd party software to run. Availability of future “virtual appliances” applications for Intel vPro technology is dependent on 3rd party software providers.
- ii. For systems configured with more than 3 GB of memory and a 32-bit operating system, all memory may not be available due to system resource requirements. Addressing memory above 4 GB requires a 64-bit operating system. Actual data rate is determined by the system’s configured processor. See processor specifications for supported memory data rate.
- iii. The memory is soldered down.
- iv. For hard drives and solid-state drives, GB=1 billion bytes, TB=1 trillion bytes. Actual formatted capacity is less. Up to 36 GB (for Windows 10) of system disk is reserved for the system recovery software.
- v. Wireless access point and internet service required. Availability of public wireless access points is limited. The specifications for the 802.11 ac WLAN are draft specifications and are not final. If the final specifications differ from the draft specifications, it may affect the ability of the notebook to communicate with other 802.11 ac WLAN devices.
- vi. Battery life will vary for devices with integrated payment. The maximum capacity of the battery will naturally decrease with time and usage.
- vii. Windows 10 MM 18 battery life will vary depending on various factors including product model, configuration, loaded applications, features, use, wireless functionality, and power management settings. The maximum capacity of the battery will naturally decrease with time and usage. See www.hp.com for additional details.
- viii. Not all features are available in all editions or versions of Windows. Systems may require upgraded and/or separately purchased hardware, drivers, software or BIOS update to take full advantage of Windows functionality. Windows is automatically updated, which is always enabled. ISP fees may apply, and additional requirements may apply overtime for updates. See <http://www.windows.com>
- ix. Microsoft Device Guard and Credential Guard are available with Windows 10 IoT Enterprise delivered from HP or to customers with a volume license to use Windows 10 Enterprise. Microsoft Device Guard and Credential Guard are not available with Windows 10 Pro. The installation of Windows 10 Enterprise and Microsoft Device Guard and Credential Guard are available through HP Configuration & Deployment Services.
- x. Configuration limitations: up to Core i3 processor, 4GB LPDDR4 memory, and 128GB SSD storage.
- xi. Android is a trademark of Google LLC.
- xii. Test results are not a guarantee of future performance under these test conditions. Accidental damage requires an optional HP Accidental Damage Protection Care Pack. HP Engage Go 10” Mobile System is IP54 rated. If unit has optional payment device IP rating goes down to IP40.

Visit www.hp.com/Engage-Go for more information.

1. Accessories are sold separately.
2. Multicore is designed to improve the performance of certain software products. Not all customers or software applications will necessarily benefit from the use of this technology. Performance and clock frequency will vary depending on application workload and your hardware and software configurations. Intel's numbering, branding, and/or naming is not a measurement of higher performance.
3. For storage drives, GB = 1 billion bytes. The actual formatted capacity is less. Up to 36GB is reserved and is not user-accessible.
4. Battery life not including payment or barcode scanner. Windows 10 MM18 battery life will vary depending on various factors including product model, configuration, loaded applications, features, use, wireless functionality, and power management settings. The maximum capacity of the battery will naturally decrease with time and usage. See www.bapco.com for additional details.
5. MIL-STD-810H testing is not intended to demonstrate fitness of U.S. Department of Defense (DoD) contract requirements or for military use. Test results are not a guarantee of future performance under these test conditions. Accidental damage requires an optional HP Accidental Damage Protection Care Pack.
6. HP Engage Go 10 with optional payment will be IP40 rated. Optional payment is available in the US only. Test results are not a guarantee of future performance under these test conditions. Accidental damage requires an optional HP Accidental Damage Protection Care Service.
7. HP Total Test Process test results are not a guarantee of future performance under these test conditions. Accidental damage requires an optional HP Accidental Damage Protection Care Pack. Testing disclaimer: Select third-party wipes that can be safely used to clean the HP Engage Go 10 up to 10,000 wipes: See wipe manufacturer's instructions for disinfecting and the HP cleaning guide for HP tested wipe solutions at How to Sanitize Your HP Device Whitepaper: <https://h20195.www2.hp.com/v2/GetDocument.aspx?docname=4AA77610ENW>
8. HP Wolf Security for Business requires Windows 10, includes various HP security features, and is available on HP Pro, Elite, RPOS, and Workstation products. See product details for included security features and OS requirements.
9. 5% ocean-bound plastics in the speaker enclosure. 50% of the plastics in the product are made from recycled plastics. 100% of the Aluminum in the product is recyclable.
10. Optional feature sold separately or as an add-on feature.
11. The Moby/5500M for HP Engage Go 10 is available for United States only and excludes integrated battery. No payment, integrated payment and payment-ready is available. Non-Ingenu One Gateways require Ingenu firmware updates.
12. 3-year limited warranty, depending on country. Onsite and other terms and conditions may vary by country.
13. Case sold separately, IP65 rating on HP Engage Go 10 Mobile System with case and optional payment is void. Test results are not a guarantee of future performance.
14. Hardware supports Payment Module or Magnetic Stripe Reader, not both. MSR is an optional feature available in select countries and requires the HP Engage Go to be configured at purchase with payment enabled mechanical ID.
15. Not available in APJ.

Intel, the Intel logo, Intel vPro and Core are trademarks or registered trademarks of Intel Corporation or its subsidiaries in the United States and other countries. Microsoft and Windows are either registered trademarks or trademarks of Microsoft Corporation in the United States and/or other countries. ENERGY STAR® is a registered trademark of the U.S. Environmental Protection Agency.

Copyright © 2023 HP Development Company, L.P. The only warranties for HP products are set forth in the express limited warranty statements accompanying such products. Nothing herein should be construed as constituting an additional warranty. HP shall not be liable for technical or editorial errors or omissions contained herein.

